

True Product Organizers

TrueFlex® | True Flex-Pac® | TrueTrac® | Horizontal Can Organizers



GDM-4ISL-48-HC-LD with TrueTrac®



GDM-26-HC-TSL01 with TrueFlex®



Product Organizers For Every Need

True offers product organizers to accommodate a wide variety of product types and sizes. Our TrueFlex®, True Flex-Pac®, TrueTrac® and Horizontal Can Organizers are easy to install, and provide a neat and consistent product presentation to effectively showcase the product and generate sales.

Our product organizers are engineered to work seamlessly with a wide range of our popular GDM, TVM and TAC models, ensuring simple installation and trouble-free operation.



True Flex-Pac®



TrueFlex®



TrueTrac®



Horizontal Can Organizer

Horizontal Can Organizers



- Simple, one-piece design
- Fits on standard shelf clips, can be used alongside flat wire shelves and TrueFlex® gravity feed organizers
- Showcases product and generates impulse purchases
- Heavy duty, PVC-coated wire
- Manufactured on True's state-of-the-art shelf production line, making True your one-stop shop for cooler shelving systems

HORIZONTAL CAN ORGANIZER KITS

Model	Part Number	Facings Per Shelf	16 Ounce Cans Per Organizer	Max Organizers Per Cooler	Total Can Capacity*
GDM-10-HC~TSL01	926893	3	18	6	108
GDM-10PT-HC-LD~TSL01	926893	3	18	6	108
GDM-10SSL-HC~TSL01	925231	3	15	6	90
GDM-12-HC~TSL01	926893	3	18	7	126

* Can capacity given is for units with the maximum number of Horizontal Can Organizers installed.

truetrac® Self-Serve Gravity Feed Organizers



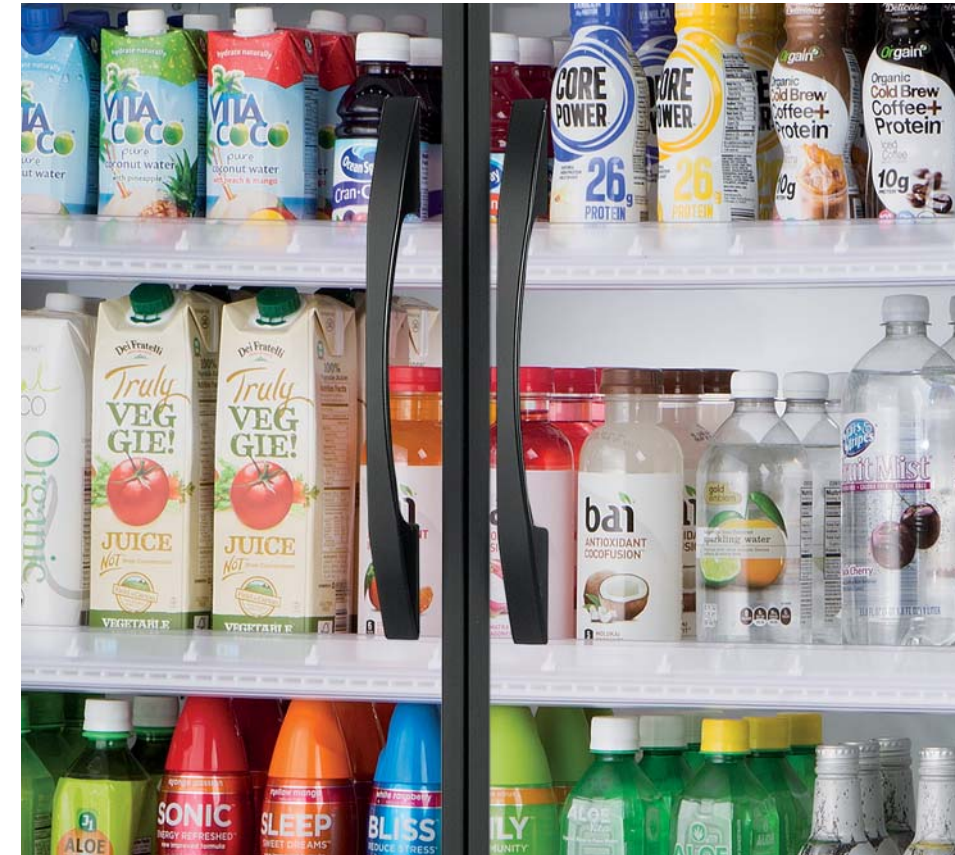
- Simple, one-piece design
- Rear bar prevents bottles from leaning against back wall
- Plastic glides allow for easy gravity feed of product
- Provides a consistent product display

TRUETRAC® KITS

Model	Part Number	Shelves Per Cooler	Facings Per Shelf	Bottles Per Shelf	Max Shelves Per Cooler	Maximum Capacity
GDM-33CPT-LD	909878	3	11	66	4	264
GDM-33CPT-54-LD	909878	3	11	66	3	198
GDM-33SSL-56-HC-LD	987156	4	10	40	3	120
GDM-35SL-RF-HC-LD	909928	4	11	55	4	220
GDM-41-SL-HC-LD	910016	8	7	30	10	300
GDM-41SL-54-HC-LD	979446	6	6	30	6	180
GDM-41SL-60-HC-LD	979446	6	6	30	6	180

Most cooler sizes can utilize TrueFlex® organizers.
 TrueFlex® organizers are available for all back bar (TBB) models.
 TrueFlex® organizers are not available for the following models (TrueTrac® organizers required): GDM-10PT-HC-LD, GDM-33CPT-LD, GDM-33CPT-54-LD, GDM-33SSL-54-LD, GDM-33SL-RF-LD, GDM-41SL-54-HC-LD, GDM-41SL-60-HC-LD, GDM-41-SL-LD.
 † TrueFlex® organizers require existing or optional shelves for installation.
 ** For GDM-35SL-RF-LD, GDM-33CPT-LD and GDM-33CPT-54-LD models only.

True Flex-Pac® System



- Easy installation
- Provides a display area for product information and pricing
- Completely adjustable to accommodate any size product
- Integrated hooks make it easy to snap dividers into place
- Neat and consistent product presentation

TRUE FLEX-PAC® SYSTEM KITS

Model	Part Number	Number of Doors	Shelves Per Door	Dividers Included	Pricing Strips Included
GDM-10-HC-LD	978199	1	3	18	3
GDM-10-58-HC-LD	978199	1	4	24	4
GDM-12-HC-LD	976528	1	4	24	4
GDM-33SSL-56-HC-LD	978217	2	4	40	4
GDM-36SL-HC-LD	978545	2	4**	40	4
TVM-36SL-HC-VMO1	978545	2	4	40	4
GDM-41SL-48-HC-LD	976879	2	3	36	6
GDM-41SL-54-HC-LD	976879	2	3	36	6
*†Optional 4-shelf kit	976879	2	4	48	8
GDM-41SL-60-HC-LD	976879	2	3	36	6
*Optional 4-shelf kit	976879	2	4	48	8

† GDM-41SL-54-LD fourth shelf option does not allow for four levels of 20-ounce bottles.
 ** No center mullion; shelves are undivided.

TrueFlex® Gravity Feed Organizers

Three sizes accommodate over 20 True models.



TrueFlex® fits GEM versions of these listed models.

TRUEFLEX® 6 BOTTLES DEEP KITS

Model	Part Number	Number of Doors	Shelves Per Door	Facings Per Shelf	Bottles Per Shelf	Max Shelves Per Door†
GDM-10-HC~TSL01	929828	1	3	6	36	3
GDM-10-58-HC~TSL01	929828	1	3	6	36	4
GDM-12-HC~TSL01	929828	1	3	6	36	4
GDM-19T-HC~TSL01	929829	1	4	7	42	5
GDM-41C-48-HC-LD	929828	2	3	6	36	3
TAC-14GS-LD	929830	NA	3	8	48	3
TAC-30/30GS-LD	929830	NA	4	8	48	4

TRUEFLEX® 7 BOTTLES DEEP KITS

MODEL	Part Number	Number of Doors	Shelves Per Door	Facings Per Shelf	Bottles Per Shelf	Max Shelves Per Door†
GDM-33-HC-LD	929831	2	4	5	35	5
GDM-35-HC~TSL01	929831	2	4	5	35	5
GDM-37-HC-LD	929832	2	4	6	42	5
GDM-41-HC-LD	929832	2	4	6	42	5
GDM-43-HC~TSL01	929832	2	4	6	42	5
GDM-45-HC-LD	929833	2	4	7	49	5
GDM-47-HC-LD	929833	2	4	7	49	5
GDM-49-HC~TSL01	929835	2	4	8	56	5
GDM-69-HC-LD	929833	3	4	7	49	5
GDM-72-HC~TSL01	929833	3	4	7	49	5

TRUEFLEX® 8 BOTTLES DEEP KITS

Model	Part Number	Number of Doors	Shelves Per Door	Facings Per Shelf	Bottles Per Shelf	Max Shelves Per Door†
GDM-23-HC~TSL01	929836	1	4	7	56	5
GDM-26-HC~TSL01	929837	1	4	8	64	5

† In order to maximize load-out of 20-ounce bottles, additional shelves are required.



- Optimum air flow ensures rapid pull-down to serving temperature
- Rear bar prevents bottles from leaning against back wall
- Easy to install; TrueFlex® glides snap on to standard wire shelves
- Double front bars and high side walls prevent bottles from tipping
- Retainer clips keep organizers from sliding into door, eliminating zip ties and service calls
- Single glides offer flexibility to display multiple types of product on a single shelf
- Enhanced silicone slip agent improves gravity feed