



Grab n go!
CONVENIENCE



NEW!

True
REFRIGERATION

TOAM | Open Air Merchandisers 30 | 36 | 48 | 72

True
REFRIGERATION



2001 East Terra Lane, O'Fallon, MO 63366-4434, USA [ph | 636.240.2400](tel:636.240.2400) [toll free | 800.325.6152](tel:800.325.6152) [email | truesales@truemfg.com](mailto:truesales@truemfg.com)
truemfg.com



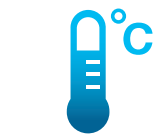
- Hydrocarbon Refrigerant
- LED Illuminated Shelving
- Built-in Night Cover
- RCU Technology

NEW!

TOAM | Features + Benefits

True harnesses the power of R290 hydrocarbon refrigerant.

R290
Hydrocarbon refrigerant is the next step, not only in terms of environmental responsibility, but also better, more efficient commercial refrigeration equipment.



Consistent Temperature



Long-Term Reliability



Energy Savings



Better Product Presentation

TOAM units offer a 900% increase in lighting than our previous air curtains, providing much greater product visibility. Additionally, air curtains have proven to increase sales through customer impulse purchases.



Better for the Operator

R290 also has superior thermodynamic properties, resulting in quicker temperature recovery, fewer incidents of equipment breakdown, and when combined with the latest components, significantly lower energy. TOAM units on average use 15% less energy than other Air Curtain Manufacturers.



Better for the Environment

R290 is a much more environmentally friendly gas than those traditionally used in commercial refrigeration (R134a & R404A), with zero ozone depletion potential (ODP), & a global warming potential (GWP) of just three.



Global Warming Potential of Refrigerants



NOTE True "HC" products significantly reduce energy consumption, and ALL products are covered, as standard, by an industry-leading 3 Years Parts & Labor Warranty and 7 year Compressor Warranty.



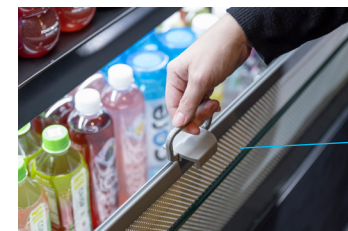
Put Your Freshness on Display

Temperature is at the heart of every True product, and our selection of Open Air Merchandisers are no exception.



LED illuminated Shelving

Each shelf is illuminated for enhanced product presentation and visibility.



Built-in Night Cover

Helps keep cool air inside and reduce energy consumption during non service hours.

natural refrigerant. Hydrocarbon Refrigerant

Equipped with R290 refrigerant that has a zero ozone depletion rating and a Global warming potential rating of three (3).



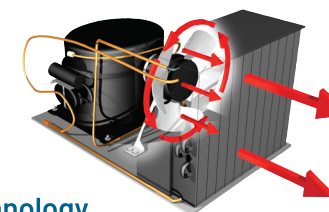
Backlit Signage, Custom Graphics

Available on select models and customizable to your brand image.



Impulse Buys

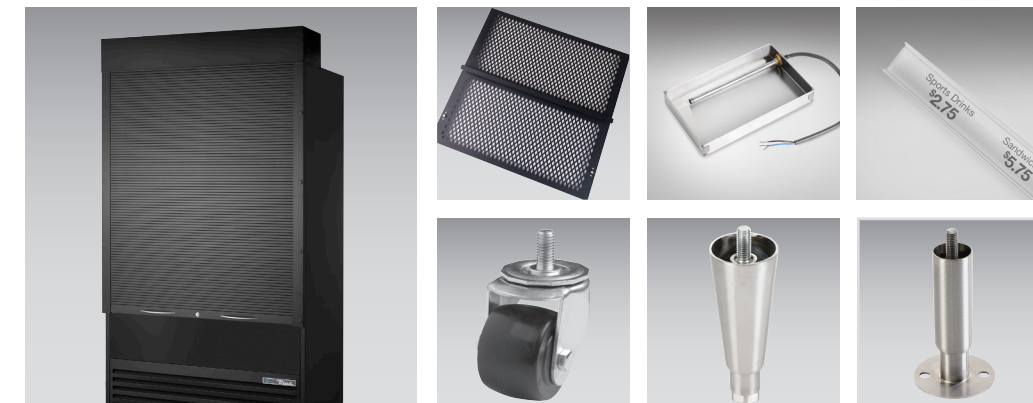
Air curtains make it easy to view and shop for products.



RCU Technology

Allows for the reversal of the condensing fan motor helping to keep the coil clean and reducing energy consumption by as much as 20%.

Accessories and Mounting Options



TOAM | Accessories

- Locking security cover (only on solid side versions) white/silver/black
- Vandal Panel (only on solid side versions)
- Heated condensate pan
- Pricing strips

TOAM | Mounting Options

- 2 1/2", 4", 5" castors
- 6" Legs
- 6" Seismic Legs

TOAM | Available Models

Considering a Built-in?

Our TOAMs were intentionally engineered to match heights with our existing line of merchandisers.



TOAM-Solid Sides



TOAM-No Sign



TOAM-Glass Sides



TOAMs

GDM's



> Night Cover shown comes standard.

TOAM Solid Sides (w/sign panel)		
Model Name	Shelves	Dimensions (L X D X H)
TOAM-30-HC-TSL01	4	30 x 29 1/8 x 78 1/2
TOAM-36-HC-TSL01	4	36 x 29 1/8 x 78 1/2
TOAM-48-HC-TSL01	4	48 x 29 1/8 x 78 1/2
TOAM-72-HC-TSL01	8	72 x 29 1/8 x 78 1/2
TOAM Solid Sides (w/o sign panel)		
Model Name	Shelves	Dimensions (L X D X H)
TOAM-30-HC-NSL01	4	30 x 29 1/8 x 78 1/2
TOAM-36-HC-NSL01	4	36 x 29 1/8 x 78 1/2
TOAM-48-HC-NSL01	4	48 x 29 1/8 x 78 1/2
TOAM-72-HC-NSL01	8	72 x 29 1/8 x 78 1/2
TOAM Glass Sides (w/sign panel)		
Model Name	Shelves	Dimensions (L X D X H)
TOAM-30GS-HC-TSL01	4	30 x 29 1/8 x 78 1/2
TOAM-36GS-HC-TSL01	4	36 x 29 1/8 x 78 1/2
TOAM-48GS-HC-TSL01	4	48 x 29 1/8 x 78 1/2
TOAM-72GS-HC-TSL01	8	72 x 29 1/8 x 78 1/2



Units in above photo show custom lower front panel decal. Please contact factory for additional details.



DID YOU KNOW



Food to go continues to out-perform total dining out market.



Nearly three quarters of the population purchase food on-the-go at least once a week.



Speed + Convenience = NO DOORS!