

## True's Pledge

TO REDUCE OUR  
CARBON FOOTPRINT  
TO MINIMIZE THE  
ENVIRONMENTAL IMPACT  
OF OUR PRODUCTS  
AND OPERATIONS.

 TRUE  
SUSTAINABILITY





TRUE is an original  
**ENERGY STAR® PARTNER**  
for commercial refrigeration

VISIT [WWW.TRUEMFG.COM](http://WWW.TRUEMFG.COM) TO VIEW ALL MODELS THAT MEET ENERGY STAR® STANDARDS.

GLASS DOOR MERCHANDISERS  
UPRIGHT REACH-INS  
WORKTOPS & UNDERCOUNTERS





## COMMITTED TO SUSTAINABILITY

**Over 70 Years** of commercial refrigeration focus have enabled TRUE to become experts in the design and development of our systems. While energy efficiency has always been part of our design process, we continue to utilize new technologies to improve our systems to be the most efficient in the industry, without sacrificing the performance that ultimately provides food safety for our customers throughout the World.

At TRUE, we are continually searching out environmentally friendly components and processes that will reduce our carbon footprint. This process encapsulates both our approach to manufacturing as well as our approach to the performance of our equipment.

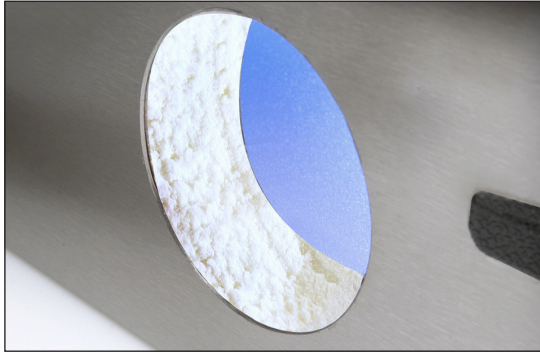
**TRUE is meeting and exceeding CEC and DOE energy standards *without sacrificing quality* through the following methods:**

**CEC:** California Energy Commission

**DOE:** US Department of Energy



Emphasizing green innovation like our Reversing Condenser Fan Motor which reverses during defrost off cycles to help keep condenser coil free from dirt, dust and debris. Keeping coils clean optimizes the unit's performance providing colder holding temperatures and increased energy efficiency.



Utilizing green materials and components such as recycled composite materials and the use of foamed in place, CFC free, polyurethane, high-density insulation that provides unparalleled strength, rigidity, and increase to an already industry-exceeding insulation factor, with zero ozone depletion potential (ODP) and zero global warming potential (GWP).



TRUE equipment meets RoHS compliance. RoHS stands for “Restriction of the use of certain Hazardous Substances” in electrical and electronic equipment. We reduced the use of major hazardous substances in the production of TRUE products, such as lead, mercury and cadmium by 99%.

# Production Processes

Just a few of the improvements TRUE has made in our production processes...

- Closed loop water systems (conserves water)
- Powder Coating (reduces VOC's)
- Printing with UV inks (eliminates solvents)
- CFC free, polyurethane, high density foam insulation (0% GWP/ODP)
- Material recycling
- Rainwater harvesting
- Low GWP Refrigerant



## 2019 compared to 2000, TRUE has...

- Reduced TRI (Toxic Release Inventory) reported chemical releases by **99.9%**.
- Reduced the release of CO2 by over **500,000** metric tons – the equivalent of removing **106,157** cars off the road last year.
- Reduced natural gas consumption by **40%** per square foot.
- Recycled **100%** of scrap metal.
- Introduced a new hydrocarbon refrigerant, R290, which greatly reduces our products' environmental impact. The GWP of our products have decreased by over **99%**.

## TRUE'S FACILITIES AND PEOPLE

### Energy Conservation

- Replaced rooftop air conditioners with more efficient Economizer units. The units use fresh air virtually “free” for cooling during the fall, winter and early spring.
- Solar-powered water heating for office kitchenettes and bathrooms.
- Reduced office lighting load by 50%.

### Recycling Program



- Paper, plastic bottles, aluminum cans, cardboard, clear plastic, mixed metals.
- Cumulative savings of **13,090** tons of material out of landfills since January 2008 – the equivalent of removing the annual CO2 emissions of **4,051** homes.



# HARNESSING THE POWER OF THE SUN

## Sustainable Alternatives

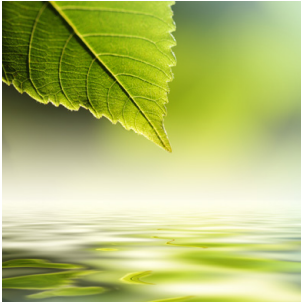
- Installed automated water faucets and hand dryers to regulate water usage and reduce paper towel waste.
- Cafeteria switched from Styrofoam plates and bowls to environmentally-friendly paper products.
- Implemented the Box-on-Demand machine for all part shipments. This machine custom makes boxes to the shape and size of each part sent out, thereby reducing the amount of cardboard used for these shipments. Additionally, any scrap produced by this machine is shredded and re-used as packaging material, reducing our reliance on Styrofoam.

We have partnered with Missouri's Brightergy, who has designed and installed solar power systems on **23 True building locations**. TRUE has produced **700,000 Kilowatt hours of energy annually**. This has resulted in a **reduction of our carbon emissions by 495 tons** each year.

Our 23 solar arrays, consisting of a total of **2,070 total solar panels**, are seamlessly integrated into the Ameren Missouri power grid.

## Environmental Savings:

- > Equal to planting **583 acres** of U.S. Forest each year.
- > Enough clean energy to power **59 U.S. homes** each year.
- > Equivalent to recycling **173 tons of waste** each year.
- > Same as taking **105 cars** off the road each year.



## TRUE SUSTAINABILITY

TRUE is committed in our efforts toward becoming a more sustainable entity and reducing our overall carbon footprint. We pledge to all of our employees and customers that we will continually search for eco-friendly components and processes that will help minimize the environmental impact of our company.



### TRUE MANUFACTURING CO., INC.

2001 East Terra Lane • O'Fallon, MO 63366-4434  
phone: (636) 240-2400 • toll free: (800) 325-6152 • fax: (636) 272-2408  
[www.truemfg.com](http://www.truemfg.com)



10% PCW (This document was printed on paper using 10% Post Consumer Waste).