

## GDM-15-RTO-HC-LD

True's "vintage" unit

True's GDM-15-RTO-HC-LD Vintage Unit combines style, quality materials and a robust refrigeration system to deliver colder product temperatures and lower utility costs in a cabinet with a unique look that brilliantly displays your product.

### FEATURES

- R290 Hydrocarbon refrigerant
- Perimeter LED lighting
- Front air discharge
- Patented reverse condensing fan motor
- "Low-E", double pane thermal insulated glass door
- Available in two exterior color options – black or aluminum
- Choose from three interior options – white, aluminum or black
- Comes standard with stainless sign panel (no cutout)
- Three sign options available\*: Market Fresh, Cold Drinks, and Wine



Optional Aluminum Exterior

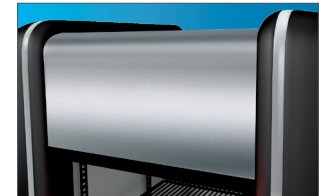
\*Optional signs are not field-installable and must be specified at time of order.

TRUE MANUFACTURING CO., INC. | 2001 East Terra Lane, O'Fallon, MO 63366-4434 USA  
ph | 636.240.2400 toll free | 800.325.6152 email | truefood@truemfg.com

[truemfg.com](http://truemfg.com)



Shown with black exterior, optional wine shelves and gold "Wine" sign



Sign: Stainless (standard)



Sign: Market Fresh



Sign: Cold Drinks



Sign: Wine (red)



Sign: Wine (black)