

Castor/Leg Options

T S S U / T U C / T W T M O D E L S



5" CASTOR Standard

Work Surface Height: 36"



3" CASTOR American Disability Act (ADA) Compliant

Work Surface Height: 34"



2-1/2" CASTOR

Work Surface Height: 33-1/2"



1-1/2" CASTOR Low Profile (LP)

Work Surface Height: 31-7/8"



6" LEG

Work Surface Height: 36"



6" SEISMIC LEG

Work Surface Height: 36"



Available on TUC, TWT and TSSU models.
Available on 27", 36", 48", 60" and 72" models.

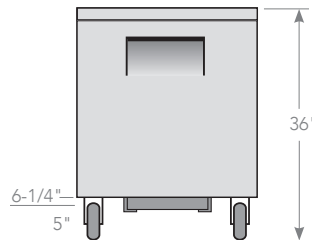
Castor/Leg Options

T S S U / T U C / T W T M O D E L S

**5" Castor
Standard**



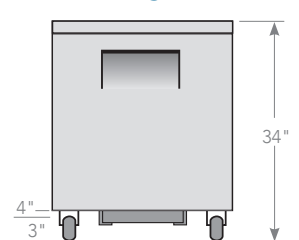
**36"
Work Surface
Height**



**3" American Disability Act
Compliant (ADA) Castor**



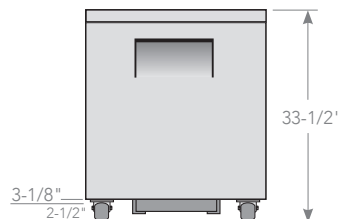
**34"
Work Surface
Height**



**2-1/2"
Castor**



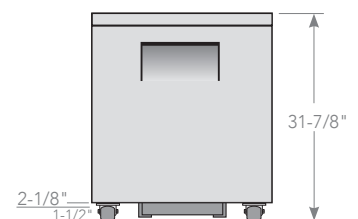
**33-1/2"
Work Surface
Height**



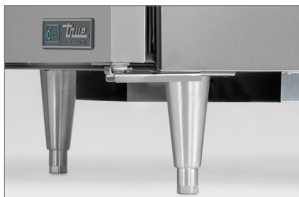
**1-1/2" Castor
Low Profile (LP)**



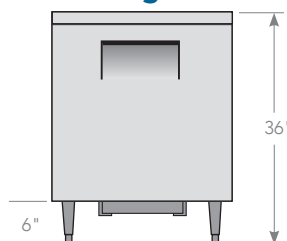
**31-7/8"
Work Surface
Height**



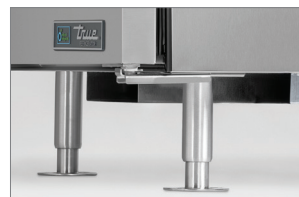
6" Leg



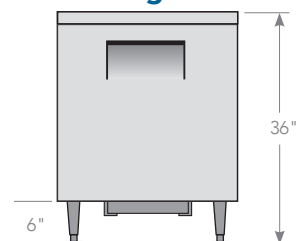
**36"
Work Surface
Height**



6" Seismic Leg



**36"
Work Surface
Height**



Note: All dimensions rounded up to the nearest 1/8".

- Available on TUC, TWT and TSSU models. Available on 27", 36", 48", 60" and 72" models.
- Units standard with 5" castors. Optional castors must be ordered at time of purchase or through parts department.
- All castor sets come with front locking mechanism. Upcharge may apply.



2001 East Terra Lane, O'Fallon, MO 63366-4434 p: 636.240.2400 f: 636.272.2408 toll free: 800.325.6152 parts toll free: 800.424.8783

truemfg.com



DF-195446-9/22